

Please note:

Ensure that a licensed electrician is installing the fitting
Read all instructions before commencing

Fitting Disassembly

1 End plates removed

Remove the end plates from the fitting with pulling and prying movements.

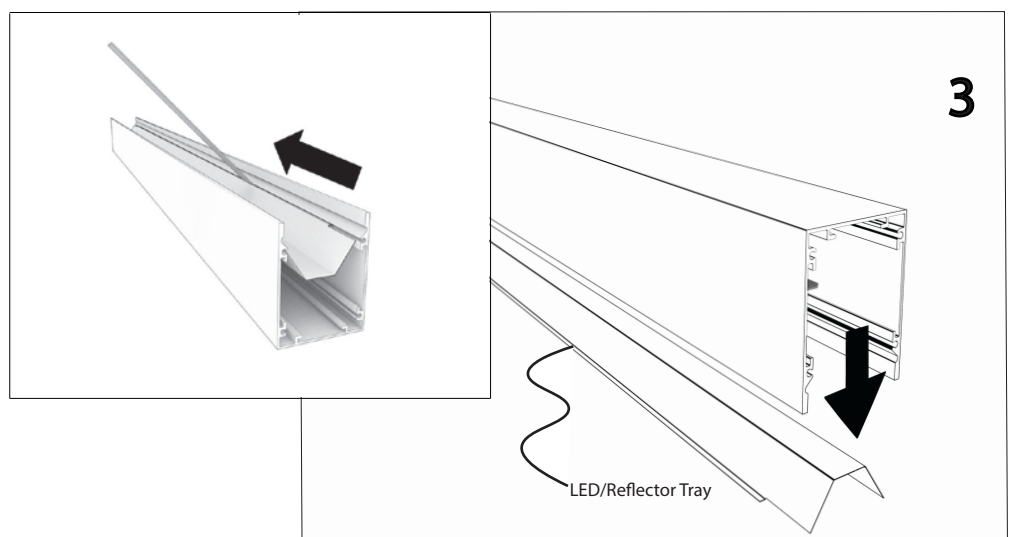
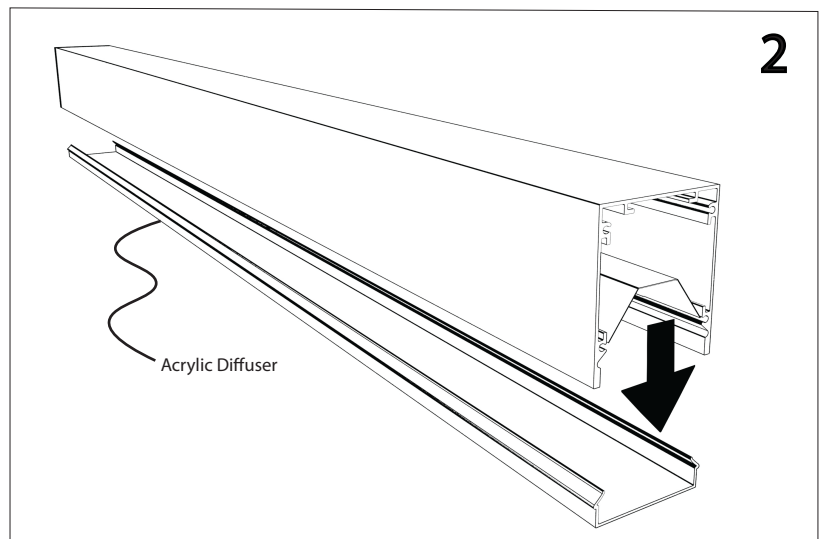
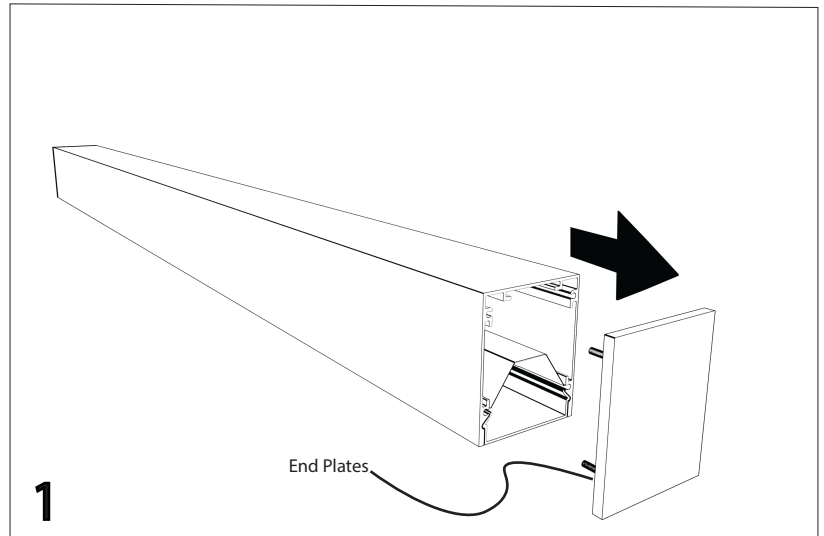
2 Acrylic diffuser removed

Hold and pull acrylic diffuser with care until it bends out of fitting.

3 LED/Reflector tray removed

Reflector tray removed from fitting.

Slide the chosen plastic tool along the reflector from one side to the other until the reflector pops out.



Tools required

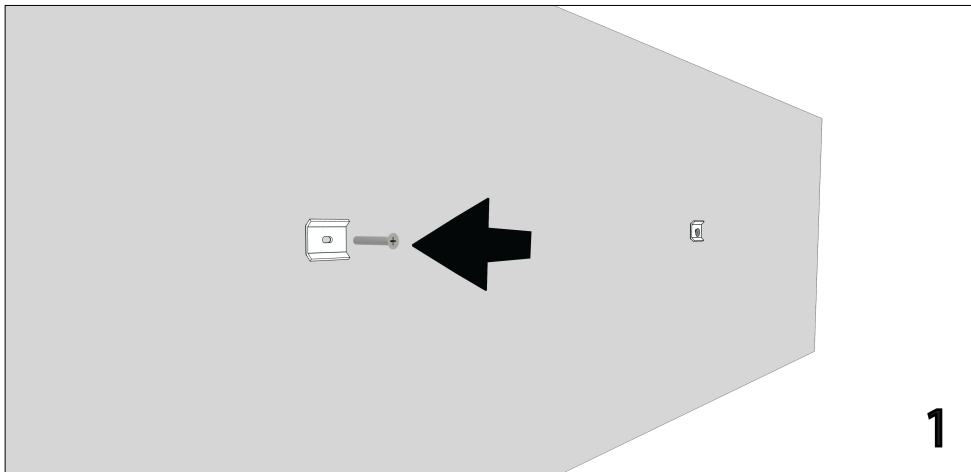
Screw driver (Flat & Philips)

Cordless drill

Plastic Card (for reflector removal)

Please note:

Ensure that a licensed electrician is installing the fitting
Read all instructions before commencing



Wall Mounting the Fitting

- 1** Mounting location on wall
Screw in mounting bracket to wall. Please ensure that this is aligned with the female bracket on the rear of the fitting.
- 2** Mounting brackets
Align and slide the fitting over the male bracket section located on the wall.
- 3** Secure fitting in place
Use the grub screw as pictured to secure male and female brackets together.

